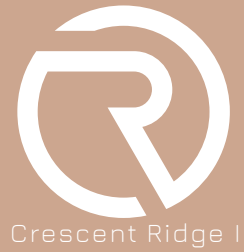
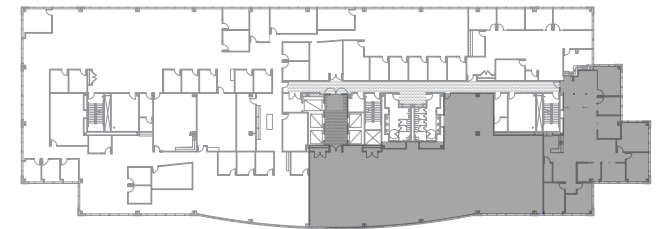
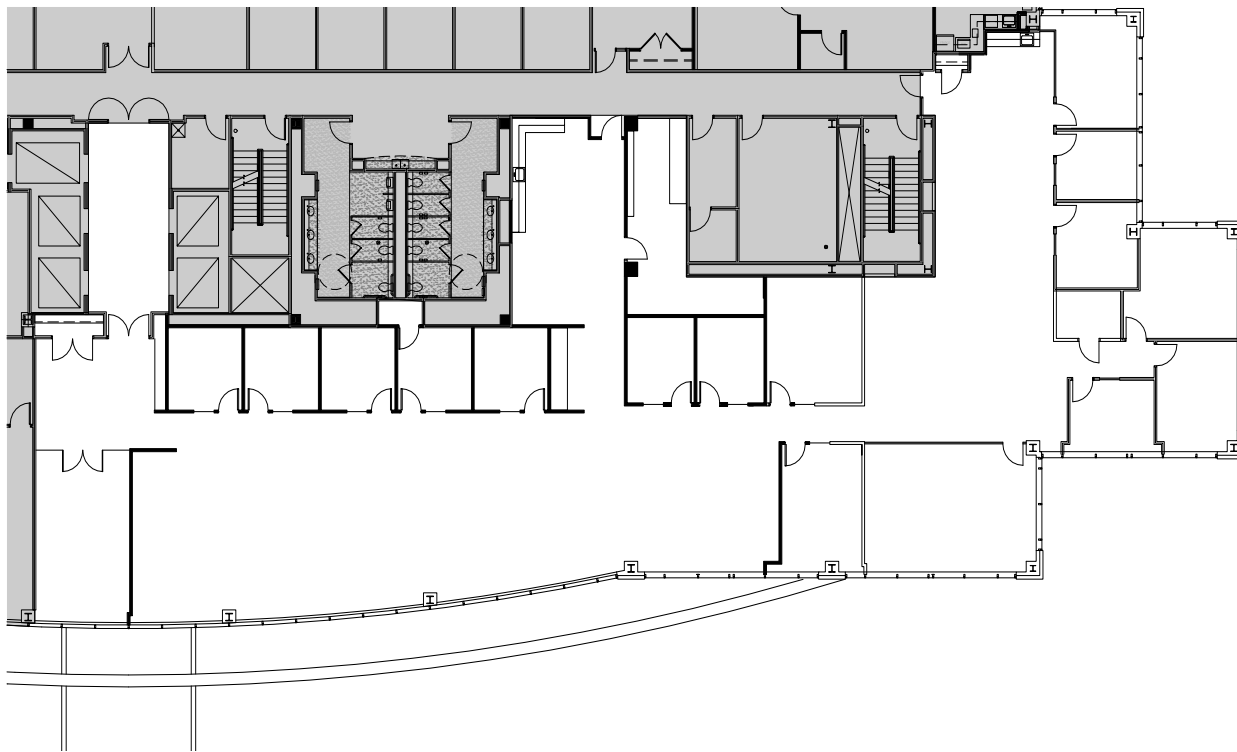


# SUITE 300

10,709 SF



1100 Wayzata Blvd, Minnetonka, MN



## LEASING CONTACTS:

Brent Robertson  
+1 612 217 5132  
brent.robertson@jll.com

Jon Dahl  
+1 612 217 5130  
jon.dahl@jll.com

Andrea Leon  
+1 612 217 5142  
andrea.leon@jll.com



## MANAGED BY:

